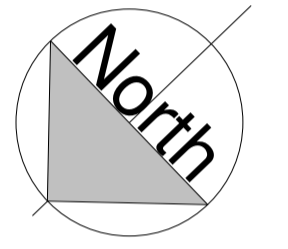
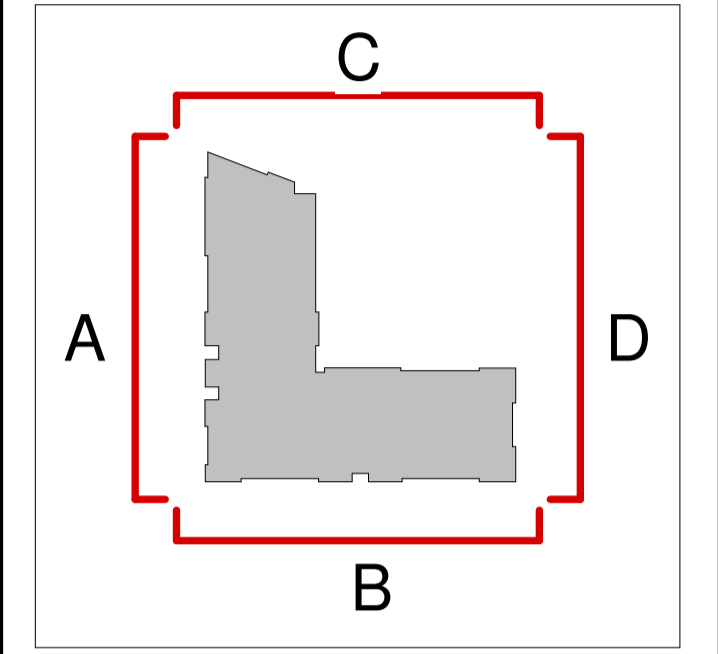


Notes:  
DO NOT SCALE FROM THIS DRAWING. USE FIGURED DIMENSIONS IN ALL CASES. VERIFY DIMENSIONS ON SITE AND REPORT ANY DISCREPANCIES TO THE ARCHITECTS IMMEDIATELY. THIS DRAWING TO BE READ IN CONJUNCTION WITH THE ARCHITECTS SPECIFICATION. © THIS DRAWING IS COPYRIGHT AND MAY ONLY BE REPRODUCED WITH THE ARCHITECTS PERMISSION.



Gross Internal Floor Area	
Level	Area
L00	1437.3 m <sup>2</sup>
L01	1061.8 m <sup>2</sup>
L02	1062.4 m <sup>2</sup>
L03	1061.9 m <sup>2</sup>
L04	726.8 m <sup>2</sup>
L05	297.5 m <sup>2</sup>
L06	234.7 m <sup>2</sup>
Grand total: 7	5882.2 m <sup>2</sup>

P03.04 13.03.18 | BLR | Issued to Planning Consultant for Review  
 P03.03 02.02.18 | PJK | Issued To Planning Consultant For Review  
 P03.02 25.01.18 | IMG | Issued For Client Review Meeting  
 P03.01 18.08.17 | IMG | Issued for Planning

Rev	Date	DRN	Description



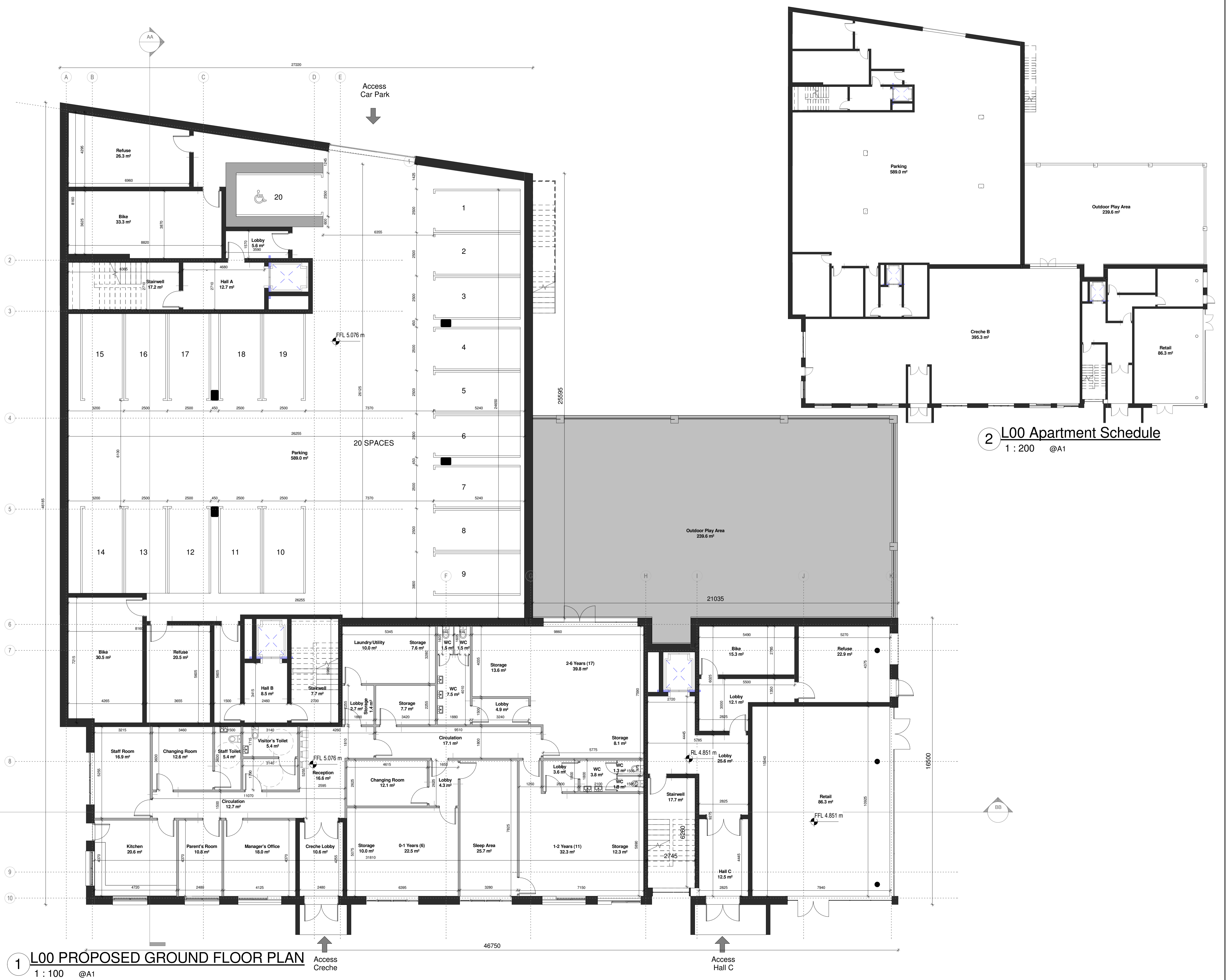
Client Details:  
 William Neville & Sons

Project Details:  
 Carcur Park  
 Wexford

Drawing Title:  
 Apartment Block 3\_L00\_Ground Floor Level

Job No P15-209K	Date 18.08.17	Scale@A1 As indicated
Status S10 - Issued for Planning	Drawn By PJK	Checked By BLR
Purpose 3.0 Planning		

Drawing Number	Revision
P15-209K-RAU-10-00-DR-A-31001	P03.04



2 L00 Apartment Schedule  
 1 : 200 @A1

1 L00 PROPOSED GROUND FLOOR PLAN  
 1 : 100 @A1